

Operating Current (A): 0.6A  
 Ignitor Voltage (Min.): N/A  
 Luminaire Rating: Open/Enclosed  
 Burning Position: Universal

**MBFU 50W/E27**
**Product Number: 00204**
**Lamp Type:** HIGH PRESSURE MERCURY

**Control Gear:** Mercury Ballast

**Performance Data**

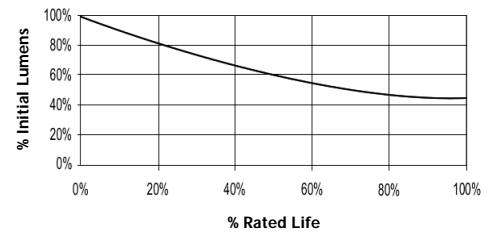
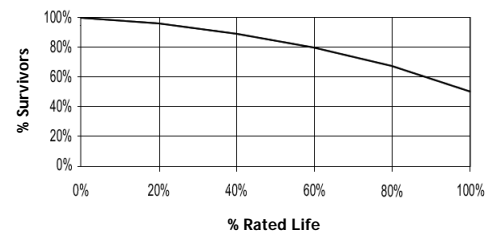
|                                      |           |
|--------------------------------------|-----------|
| Light Output (Lumens @ 100 hours)    | 1800      |
| Lamp Lumens Per Watt                 | 36        |
| Rated Life (Hrs. @ 10 Hr. /Start)    | 12000     |
| Correlated Colour Temperature (K)    | 4000      |
| Chromaticity (CIE - X Y)             | 390, 390  |
| Colour Rendering Index (CRI) or (Ra) | 40        |
| Typical Warm Up Time (Minutes)       | 6         |
| Typical Hot Restart Time (Minutes)   | 4-7       |
| Burning Position                     | Universal |


**Physical Data / Requirements**

|                            |               |
|----------------------------|---------------|
| Base Designation           | E27           |
| Bulb Designation           | E55           |
| Bulb Diameter (mm)         | 55            |
| Max. Overall Length (mm)   | 130           |
| Light Centre Length (mm)   | -             |
| Effective Arc Length (mm)  | -             |
| Max. Base Temperature (°C) | 125           |
| Max. Bulb Temperature (°C) | 300           |
| Luminaire Type             | Open/Enclosed |
| Socket Pulse Rating (KV)   | -             |

**Electrical Data / Requirements**

|   |     |
|---|-----|
| IEC Standard                            | -   |
| Lamp Wattage (W)                        | 50  |
| Operating Voltage (V)                   | 95  |
| Operating Current (Amps)                | 0.6 |
| Min. Open Circuit Voltage (RMS)         | 198 |
| Min. Starting Pulse (Peak V)            | -   |
| Min. Pulse Width at 750V (microseconds) | -   |
| Min. Pulse Rate Per ½ cycle             | -   |
| Pulse Position (Electrical Degrees)     | -   |

**Lumen Maintenance**

**Lamp Mortality**

**Revision:** 04/01/08

**Notes:**

Complies with (CE), Low Voltage (CE), WEEE and RoHS Directives.

The specification contains data about typical performance on 50Hz sine wave ballast at nominal power. Actual values may depend on ballast and applications.